



Health / Aged Care

Japara Riverside Views Residential Care

Img 20170919 113733

Riverside Residential Care will cater to the care needs of 88 residents, including 22 rooms in a state-of-the-art Memory Support Unit for those with dementia. The residence will also provide enhanced lifestyle options through its Wellbeing Services Program.

The Riverside Aged Care Facility is located in Launceston, Tasmania. The elevated and steeply sloping site affords sweeping views over the Tamar River valley. Riverside ACF has been designed to provide its residents with a premium level of amenity and comfort. Riverside will be the home for 60 high care residents together with 30 experiencing dementia. It will include a range of accommodation styles and facilities for residents.

The residents and their support services are located on the upper two levels of the building. Both floors include a range of spaces for either large or small group gatherings. Bedrooms are organised into 15 room clusters for staffing efficiency and operational need. The development includes a central kitchen and full on-site laundry.

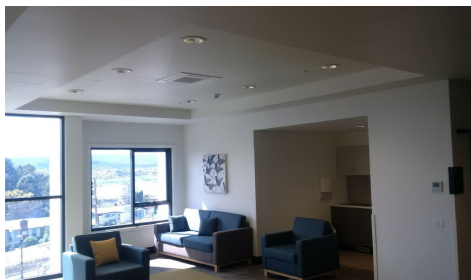
Decrolux supplied the complete lighting package for Japara Aged Care, with over 1300 light fittings. All LED, with 5 Year Warranty.

PROJECT DETAILS

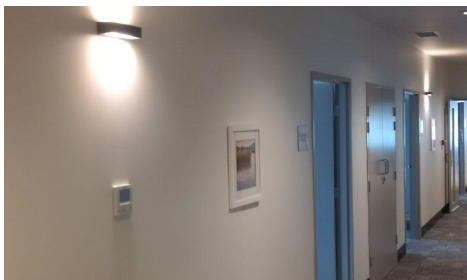
Size	88 Single Beds, with 22 Dementia Units
Levels	3 Levels, with undercover carparking
Project Value	\$18M
Council	West Tamar Council
Architect	HSPC Health Architects
Electrical Engineer	SEMF
Builder	Vos Constructions
Electrical Contractor	Klimate Solutions
Completion	July 2017



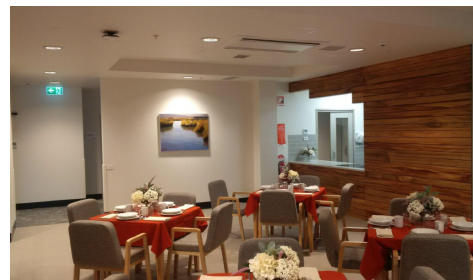
Img 20170919 111105



Img 20170919 111738



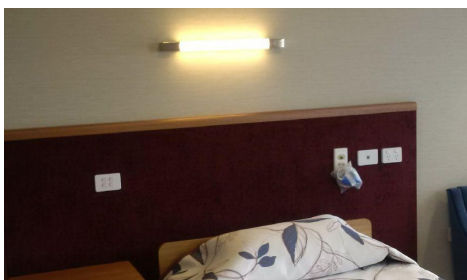
Japara Aged Care



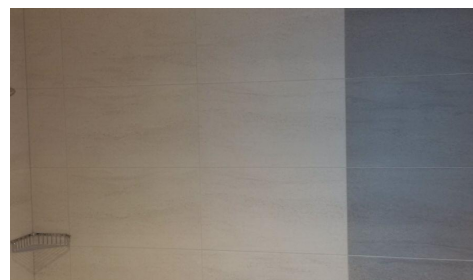
Img 20170919 111901



Img 20170919 112621



Img 20170919 113401



Img 20170919 113411

Products Used



MORGAN 16W
Up/Down Exterior Wall Light



GROVE 3.5W
Recessed Wall Light