



## Education

Library

# Moama Anglican Grammar School

Decrolux was the preferred lighting supplier for the project, providing linear pendants, downlights, panel lights, and exterior landscape lighting.

Moama Anglican Grammar School is situated on a picturesque and expansive 10 hectares on the NSW-Victorian border, offering high quality K-12 education in a caring and disciplined environment.

Moama Anglican Grammar School commenced in 2006 with 16 Students, expanding to over 700 in 2017. Rapid expansion has demanded more and more facilities.

The school's biggest project yet, a new library and an extension to the administration building, has been constructed. The 2062m<sup>2</sup> state-of-the-art facility includes a 485m<sup>2</sup> open space with movable shelving and furniture. Private study rooms, technology rooms and a boardroom will surround the open plan library to provide specialist curriculum options.

The increase in student numbers has also resulted in increases in teaching and administration staff. The existing staff and administration office building will be expanded to include open plan work spaces, private offices and meeting rooms for parent teacher consultations.

Decrolux was the preferred lighting supplier for the project, providing linear pendants, downlights, panel lights, and exterior landscape lighting.

### PROJECT DETAILS

<b>Location</b>	Moama, NSW
<b>Architect</b>	Brandrick Architects
<b>Builder</b>	Moretto Building
<b>Electrical Contractor</b>	Laser Electrical
<b>Electrical Wholesaler</b>	Middys - Echuca
<b>Completion</b>	2017



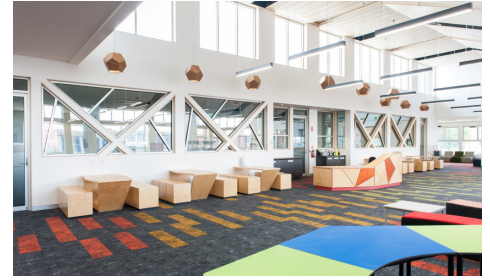
Moama Anglican Grammar School



Facade



Library



Classroom



Reception



Library



Exterior

## Products Used



### **BLAIZE 30W**

Rectangle Panel Light 1200x300



### **ASTON 30W**

Linear Pendant 1125mm