



Education

St Patrick's College

St Pat's Exterior

Staff & Administration Redevelopment + Brady Wing

St Patrick's College is a Catholic co-educational secondary (Years 7-12) college, located in Launceston, Tasmania. With close to 1500 students, the school required a major overhaul that included upgrades to the existing facilities as well as additions.

Perhaps the most show stopping feature is the suspended zigzag pattern of light created from the ASTON Linear Series. The matte black powdercoat finish of the sleek profile contrasts the detail and texture in the wood panelling that lines the surrounding walls. The high ceiling and long wire suspension on the pendant creates the illusion of a floating object while the skylights allow for a generous amount of natural light.

In the other spaces, the lighting selection was pared back and minimal to reflect the new modern aesthetic.

PROJECT DETAILS

Location	Launceston, TAS
Architect	CMK Architects
Electrical Engineer	Co-ordinated Engineering Services (CES) - Hobart
Builder	Beardwood Pty Ltd
Electrical Contractor	Degree C - Launceston
Electrical Wholesaler	Power & Automation
Completion	Mid 2020



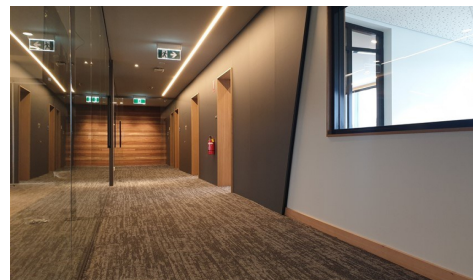
St Pat's Lobby



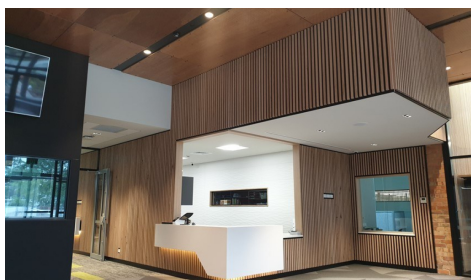
St Pats Lobby Straightened



St Pat's VC Room



St Pat's Corridor



St Pat's Reception



St Pat's Aerial View

Products Used



NEO K8.2

Rectangle Mount Ring



ASTON 45W

Direct/Indirect Pendant 1125mm