

# APOLLO 100W

## Industrial Highbay

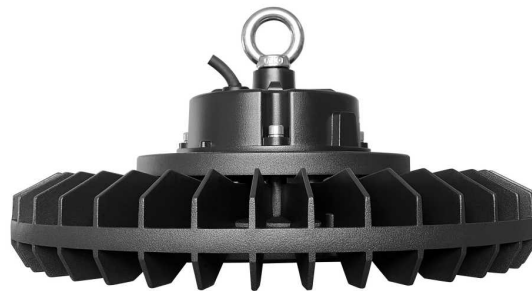
**dynamic series**

Efficient. Cutting Edge. Reliable

The APOLLO Highbay features new and upgraded technology with an improved heat sink, quality LED driver and optimised reflector for better light coverage. It is designed to give lasting, maintenance-free life through excellent temperature management with large metal fins to draw heat away from the LED chips. With an IP65 rating, it is corrosion resistant and suitable for outdoor and wet applications. It has an impact rating of IK08 with a standard glass cover. IK10 is available, with an optional polycarbonate cover accessory.



**IP65**



### SPECIFICATIONS

#### Material Specifications

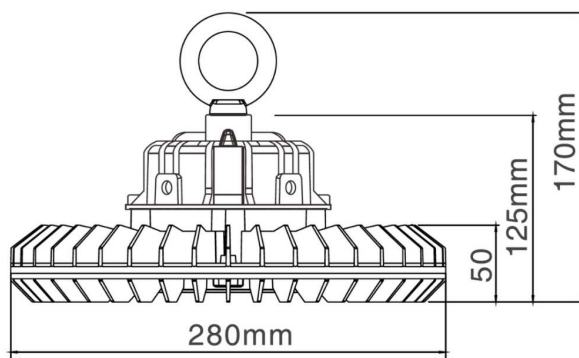
<b>Housing</b>	ADC12 Die-Cast Aluminium
<b>Finish</b>	Anti-Corrosion AkzoNobel Powdercoat Black
<b>Dimensions</b>	280mm (Dia) x 170mm (H)
<b>Impact Rating</b>	IK08
<b>Ingress Protection</b>	IP65
<b>Mounting</b>	Stainless Steel eyelet supplied
<b>Weight</b>	4.32kg
<b>Warranty</b>	5 Year Replacement

#### Electrical Specifications

<b>Power Supply</b>	100W Sosen Series
<b>Dimming</b>	Non-Dimmable
<b>Connection Method</b>	Australian 3-Pin Plug & 2m Lead
<b>Operating Temperature (Ta)</b>	-20°C to +50°C

#### Optic Specifications

<b>Light Source</b>	180 x Lumileds Luxeon 3030
<b>Delivered Lumens</b>	14,100lm
<b>CRI</b>	Ra 82
<b>Beam Angle</b>	120°
<b>Reported L70 (Hours)</b>	> 60,000 Hrs



### VARIATIONS

<b>LC2437</b>	APOLLO 100W Highbay, Black, 120°, Non-Dim, 5700K, 14,100lm
---------------	--