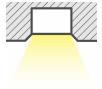


BLAIZE/ CREST

Plaster Recess Kit

The BLAIZE LED Panel Light is at the leading edge of commercial lighting. The plaster frame allows greater flexibility to the BLAIZE & CREST product range. It provides the ability for t-bar fixtures to be installed into plaster ceilings without any modifications to the original t-bar luminaire design. Surface Mount and Suspension Kits also available.



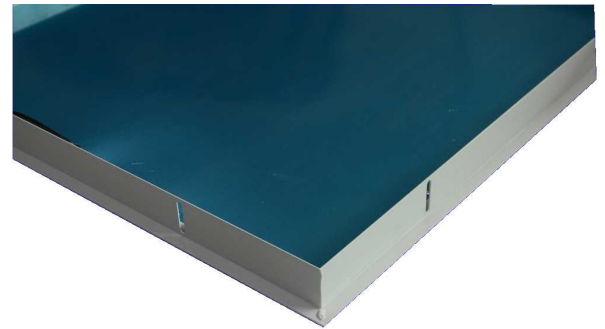
SPECIFICATIONS

Material Specifications

Material	Premium Grade Aluminium
Colour	White Powdercoat
Options	Black Available
Application	Attaches to BLAIZE & CREST Panel Lights (Sold Separately)
Warranty	5 Year Replacement
Weight	1.0kg Average

Dimensions

Dimensions	31mm Overall Depth
Cutout	LC7039: Plaster Cutout: 315 x 315mm - Overall Frame 332 x 332mm
Cutout	LC7041: Plaster Cutout: 615 x 315mm - Overall Frame 632 x 332mm
Cutout	LC7042: Plaster Cutout: 608 x 608mm - Overall Frame 620 x 620mm
Cutout	LC7043: Plaster Cutout: 1215x315mm - Overall Frame: 1233x333mm



VARIATIONS

LC7039	Plaster Recessed Kit to suit 300x300 BLAIZE Panel Light, White
LC7041	Plaster Recessed Kit to suit 600x300 BLAIZE Panel Light, White
LC7042	Plaster Recessed Kit to suit 600x600 BLAIZE Panel Light, White
LC7043	Plaster Recessed Kit to suit 1200x300 BLAIZE Panel Light, White
LC7044	Plaster Recessed Kit to suit 1200x600 BLAIZE Panel Light, White
LC7043B	Plaster Recessed Kit to suit 1200x300 BLAIZE Panel Light, Black