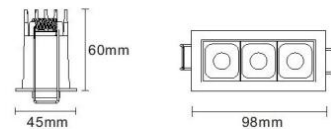
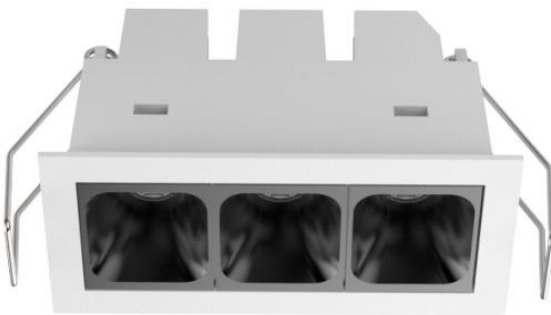


Product Overview

Product Name / Code	LINX 7W Linear Downlight Fixed - LC4460
Description	3000K, IP40, 40°, White/Black Insert, Phase Dim
Manufacturer	Decrolux Lighting Pty Ltd



Laboratory and Equipment

System Name / Model	LabSpion / Freedom VIS (Custom Viso)
Manufacturer / Serial Number	Ibsen Photonics, Denmark / 2417457569
Sensor Name	LabSensor Model2
Sensor Serial Number / Calibration Date	3430823524 / 7/12/2022

Measurement Details

Test Date and Time	5/05/2023 11:00:18 AM
Operator	Johnny Elmer
C-Planes Measured	36
Measurement Resolution	10°
Measurement Distance	464.4cm
Measurement Number	VFR-230505-0077-MS
Tracking Link	http://www.visosystems.com/tracking/?id=VT230508-002572



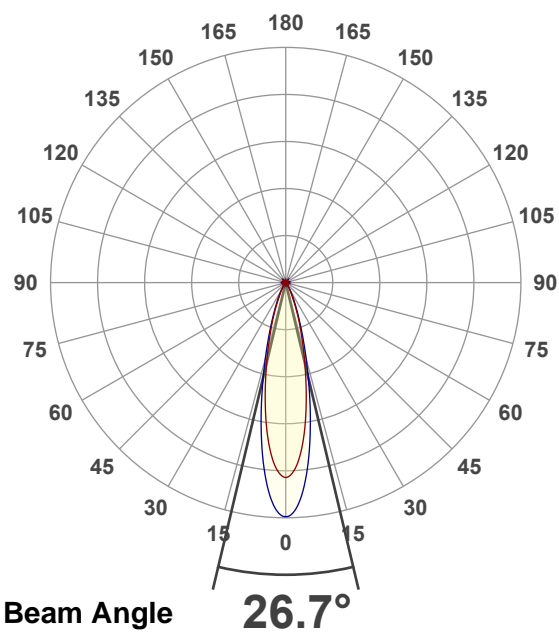
Performance

Total Lumen Output	598 lm
Light Efficiency	78 Lumen/Watt
Peak (cd)	2666 cd
Nominal Power	7.7 W
Input Voltage	240 V
Power Factor	0.91

Optic Specifications

Colour Temperature	3028K
Light Quality	CRI 90.2
R₉ Value	50.2
Beam Angle	26.7°

Polar Diagram



Colour Rendering Index per reference colour

